

# DRIVE YOUR STORY

Explore five unmissable  
coast and country drive trails

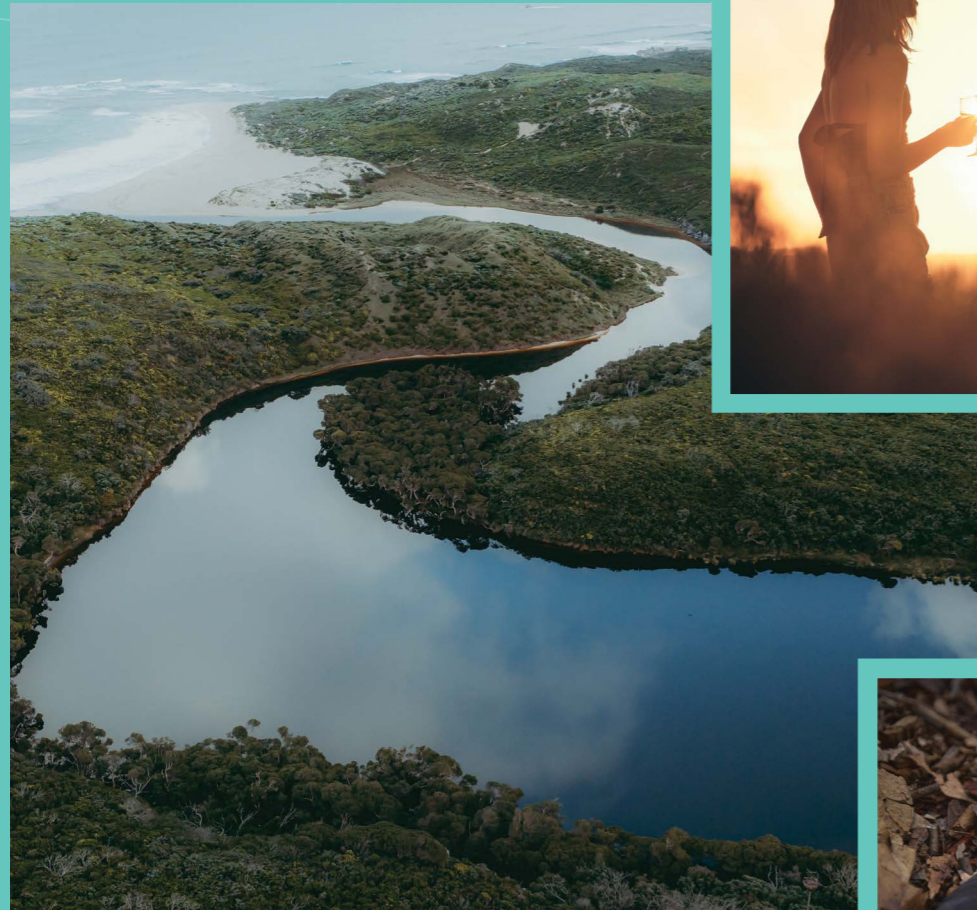
FREE  
GUIDE

**BUSSELTON  
DUNSBOROUGH  
COWARAMUP  
MARGARET RIVER  
AUGUSTA**



**MARGARET  
RIVER  
REGION**

ON WADANDI BOODJA



## MARGARET RIVER REGION ON WADANDI BOODJA

For over 50,000 years the Margaret River Region has supported one of the world's longest, unbroken human occupations, resulting in an immensely deep cultural knowledge and connection to the land. It is the traditional land of the Wadandi (Saltwater) People.

The Margaret River Region is a living and breathing embodiment of ancient geography and Wadandi song lines. Natural beauty, abundance of space, fine wine and fresh coastal air make a holiday here the remedy to modern life.

While visiting we ask that you walk softly, taking the time to listen to and care for Boodja (Country).



# DRIVE YOUR STORY

Feel the adventure unfolding in your hands as you explore beyond the expected. Discover wild places, culture, produce, ideas and inspiration to make your next getaway an unforgettable experience.

Plan ahead then feel free to get a little sidetracked while finding new favourites, slowing down with a swim, or stopping into a hidden gem. Linger a little longer to bask in the glow of sunset. Bring home a story that's all your own.

Scan to start your journey.



## MARGARET RIVER REGION

ON WADANDI BOODJA



Explore the drive trails at [driveyourstory.com](http://driveyourstory.com)

# Bay & Bounty Trail

# DRIVE YOUR BUSSELTON STORY



## Visitor Information

Busselton Visitor Centre  
 17 Foreshore Parade, Busselton  
 Monday – Sunday: 9am – 5pm  
 Telephone: (08) 9780 5911  
 Email: welcome@margaretriver.com

Explore the drive trails at [driveyourstory.com](http://driveyourstory.com)





# BUSSELTON

**Stripped back and relaxed, classic family memories are made here.**

Family holiday legacies are made here. The classic elements remain unchanged: the crystalline, protected waters of Geographe Bay. The foreshore lined with the iconic Norfolk Pines. The historic Busselton Jetty, cherished by generations of locals and visitors who have walked along it, jumped off it, snorkelled, dived, fished from it.

The nostalgia here is palpable, harking back to a simpler time – one of free time. Naturally, the bay is front and centre on this trail but scratch a bit deeper into the bountiful hinterland and you'll find more experiences that hold onto Busselton's essence and give back even more.

The calm of the coastline is paralleled by the adventures found inland. Expect genuine grassroots cellar doors, one of West Australia's top produce and artisan markets, quality locally crafted beer and unforgettable family holiday memories.



## Highlights

- Geographe Bay
- Busselton Jetty
- Family nostalgia
- Craft beer and artisan produce
- Foreshore and forest



## GEOGRAPHE BAY

Geographe Bay is like the Margaret River Region's infinite lagoon, stretching from the edges of Busselton all the way past Dunsborough to the tip of Cape Naturaliste. It is the location of choice for generations of family holidays – for bathing, swimming, kayaking, fishing and more. The beauty of the bay (aside from its crystal clear, turquoise waters) is its protection, oriented away from an oft-prevailing southerly wind, the bay barely has any swell or surf, making it ideal and safe for most ages and abilities. It is the backdrop to daily life between Busselton and Dunsborough.

## Wonnerup House

**Thursday to Monday 10am - 4pm**  
**Ph: 9752 2039 • 935 Layman Rd, Wonnerup**  
[nationaltrust.org.au/places/wonnerup/](http://nationaltrust.org.au/places/wonnerup/)

At over 160 years old, Wonnerup House, run by The National trust of Western Australia, is an important cultural and historical site just outside of Busselton, adjoining the picturesque Tuart Forest and Vasse Estuary wetlands. New informative displays explore a history of two worlds colliding, as the peaceful setting of Wonnerup belies a more difficult and turbulent past. Working with Traditional Custodians and members of the Layman family, the National Trust has installed a simple but provocative presentation to encourage visitors to question their knowledge of the past and to consider how we understand truth.

## Busselton Jetty

**7 days 9.30am – 4.15pm**  
**Ph: 9754 0900 • 3L Queen St, Busselton**  
[busseltonjetty.com.au](http://busseltonjetty.com.au)

The Busselton Jetty is an absolute icon of the region, as the centre of (and spectacular backdrop to) all the activity and bustle of the City's foreshore. Generations of family holidays and traditions have played out here, from walking along – or jumping off – it, to diving, snorkelling or fishing. Find your own way to experience the jetty, (at a history-making length of 1.8km) – whether it be visiting the Underwater Observatory (one of only six in the world), taking in the colourful coral and sea life underneath, or riding the famous red electric train to the end. This is an unmissable attraction in Western Australia.

## Forest Adventures South West

**Thursday to Monday 9am – 5pm.**  
**CLOSED Tuesday & Wednesday**  
**During WA School Holidays: open 7 days.**  
**Ph: 9780 5908 • 12 Ludlow Park Rd, Busselton**  
[forestadventures.com.au](http://forestadventures.com.au)

The Ludlow Tuart Forest is an unsung gem in Busselton – an ancient forest of 300 – 400-year-old trees standing 33 metres tall, complete with peppermint trees, picnic spots and possums. There is no better way to enjoy the forest than getting right up into the treetops – enter Forest Adventures! An eight-acre, high rope adventure course park with 77 activities spread over six courses, for people of all ages and abilities. The course combines world class European standards for safety and design with the South West's supreme environment, with many of the activities on offer being unique within Australia.

## The Sophisticated Beast

**6 days: 1pm – 5pm Closed Wednesday**  
**2/30 Burler Dr, Vasse**  
[www.beast.beer](http://www.beast.beer)

Busselton can claim its unofficial title as the new beer capital in the South West. The craft beer pop-ups are, well, popping up! And the Sophisticated Beast is a great lo-fi addition, located in the Vasse light industrial area. The small brewery is run by an ex-winemaker with a decade of experience in the region, calling on that industry know-how by incorporating mature wine barrels and grapeskins into the brews. The mundane is avoided, and wild ferments and farmhouse styles are favoured, challenging minds and palates!

## FURTHER AFIELD

### **Whicher Ridge Wines**

**Thursday to Monday 11am to 5pm**  
**Ph: 0448 531 399 • 200 Chapman Hill E Rd, Chapman Hill**  
**whicherridge.com.au**

Whicher Ridge Wines is welcoming and authentic, where every experience is hosted by owner and winemaker Cathy Howard. The sustainable, artisan winery is just 20 minutes inland of Busselton and houses a unique and original Wine Sensory Garden as the centrepiece of all visits. The garden helps to describe the flavours tasted in each wine varietal, and teaches how easy it can be to pair food with wine. There is a choice of experiences, including wine tasting, garden tours, hamper picnics, evening soirees and more. The venue is dog friendly, where resident wine dog, Polly, is the star. Yes, this one is a little off the beaten track but well worth the journey.

### **After Hours Wine**

**7 days a week 10am – 4pm**  
**Ph: 0414 420 670 • 455 N Jindong Rd, North Jindong**  
**afterhourswine.com.au**

After Hours Wine is a small family (and viticulturist) owned and run vineyard. The wines are small-batch, handcrafted and estate grown, with only 2500 cases of wine made each year from eight hectares. Plantings consist of Cabernet Sauvignon, Shiraz, Merlot, Semillon, Sauvignon Blanc and Chardonnay, with precision applied to all operations of the vines. The vineyard lies on the Carburnup River Flat, where vineyard management from the Mathews family has led to low yielding, but high quality, grapes. The winery is open seven days, with the renowned West Winds Gin also distilled and available on site.

### **Discover Deadly Reptile Education Centre**

**Wednesday – Monday 10am – 4pm**  
**Ph: 9755 1771 • 10 Wildwood Rd, Carburnup River**  
**discoverdeadly.com.au**

Whether you have a fascination or fear of scaly critters this renowned reptile centre provides 'edutainment' at its finest. Enjoy a fun experience with a difference: meet a friendly python, watch dragons being fed, learn about arachnids, listen to the frog chorus, or simply be mesmerised by the floating turtles. There is a themed nature play including a life-size 3D snakes and ladders game plus coffee available at weekends. The centre holds over 40 different species of reptile, amphibian, arachnid, and birds including a rather spectacular crocodile. Discover Deadly promotes conservation and respect for all native wildlife, it truly is one of Western Australia's best reptile centres.



### **Flametree Wines**

**7 days 10am – 5pm**  
**Ph: 9756 8577 • 7 Chain Ave, Dunsborough**  
**flametreewines.com**

Flametree Wines is one of the only quasi-seaside wineries in the region, ideally located near the shores of Geographe Bay between Busselton and Dunsborough. The soaring cellar door - with its beach-style architecture - has indoor seating, a spacious deck and manicured grounds. There are plenty of options for wine tasting or sharing a produce platter with friends - either outside in the warmer months or fireside in winter. The staff are super knowledgeable and friendly, and the cellar door is a family and dog-welcoming venue (perfect for picking up a bottle en route home from a swim!).

### **Origins Market**

**Thursday to Sunday from 8.30am**  
**7 days during school holidays**  
**Ph: 0457 452 216 • 86 West St, Busselton**  
**originsmarket.com.au**

Origins Market is something entirely new in the South West: a community of over 60 local producers and makers under one stylish roof in a modern market and food hall environment. Pop down for a morning coffee and pastry; to pick up fresh provisions of cheese, seafood or meats; to have lunch, wine taste; take the kids to the indoor playground; the reasons are plentiful. The Tasting Hall precinct offers free tastings from the region's wineries, breweries, cideries and distilleries all under one roof - a great starting point for getting to know the region. The markets celebrate produce, artisans and gourmet eateries right in the heart of Busselton.



### **Shelter Brewing Co**

**7 days a week, 10am – 10pm and from 7am for Coffee & Bagels.**  
**Ph: 9754 4444 • 11 Foreshore Parade, Busselton**  
**shelterbrewing.com.au**

Although relatively new, Shelter Brewing Co is already a stalwart of the iconic Busselton Foreshore, with its soaring, beer-hall-style dining room, frothing good beers and casual menu. The brewery claims to embody the soul of Busselton in all its efforts, owned and run by two long-time local families. Craft beer is made on-site (quite literally on the shores of Geographe Bay), there's local wine and spirits on the drinks list, plus regional food made beautifully, with the kitchen featuring an imported woodfired pizza oven from Italy. It's a new must-stop venue on your Busselton itinerary.

## LOCAL GUIDES & TRANSPORT

### **Gannaways Charters and Tours**

**Ph: 9752 3036 • gannaways.com.au**

Gannaways Charters and Tours is a WA family owned and run tour company based in Busselton - servicing Perth and the South West - for more than 40 years. If your holiday calls for private group touring, winery tours, event transport or pre-packaged day and extended tours Gannaways can help. Their fleet of luxury coaches and experienced driving team has a vast knowledge of the region providing guests with the highest standard of safety and care. Their first-class service, professional team offer peace of mind during your travels.

### **Forage Safaris**

**Tuesday - Saturday: 9am – 5pm**  
**Ph: 0439 906 661 • 17 Foreshore Parade, Busselton**  
**foragesafaris.com.au**

A staple of Forage Safaris' experiences is to meet with farmers and producers, in person and on their land. The safaris take in some of the region's more "hidden-gem" makers, getting off-piste and along the backroads in all-inclusive food and farm experiences. Sustainability and luxury are key principles, with your pick of day trips to choose from and varying group suitability (including for families). Share in the joys of country life without pretension, but definitely with authenticity, personality and enticing picnics.

## WHERE TO STAY

### **Abbey Beach Resort**

**Ph: 9755 4600 • 595 Bussell Hwy, Broadwater**  
**abbeybeach.com.au**

Experience all the family holiday comforts of Busselton, but from your own slice of 'millionaire's row' at Abbey Beach Resort. The white sandy beachfront at the doorstep is only part of the appeal here - lying just beyond the recognisable three storey rendered building - which holds one to three-bedroom apartments, each with private balcony and spa. Live your best resort life at the biggest accommodation of its kind in the region - complete with pristine Geographe Bay frontage, a restaurant, three bars, two pools, gym and sauna, playground, tennis and squash courts, sports and game hire, barbecue areas and much more.

### **Broadwater Resort**

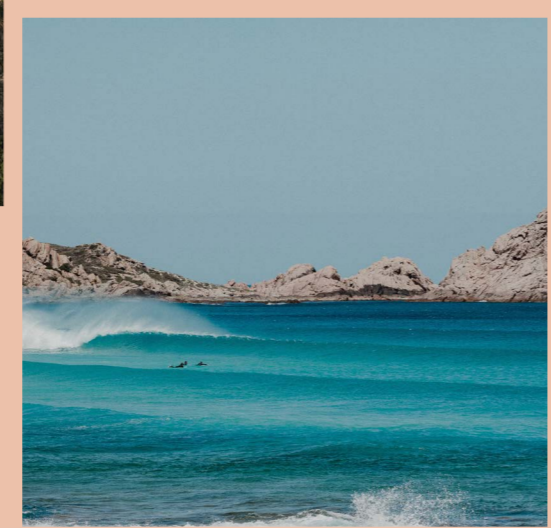
**Ph: 9754 1633 • 11 Holgate Rd, Broadwater**  
**broadwaterresort.com.au**

The lush and leafy Broadwater Resort is engulfed by native 'peppi' trees along Geographe Bay beachfront, obscuring the bright and beachy rooms, apartments and villas dotted on its grounds. The resort is an oasis away from home, with a heated indoor pool and spa, outdoor pool, lounging and barbecue facilities, e-bike hire and boat-mooring options just to mention a few highlights. The new Tonic By the Bay covers your beach bar, eats and beats needs (and has become a fast-favourite with the locals) serving modern, seafood-inspired cuisine.



Graze & Bathe Trail

# DRIVE YOUR DUNSBOROUGH STORY

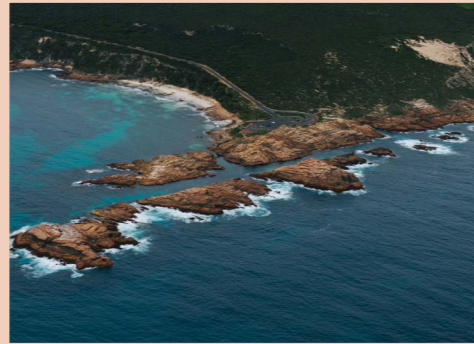
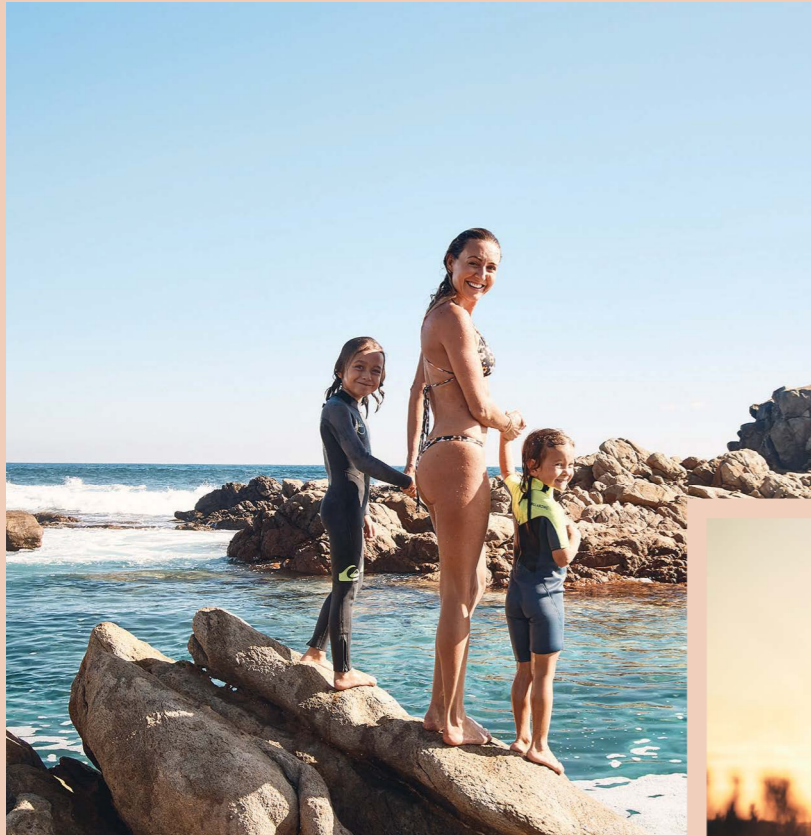


## Visitor Information

Busselton Visitor Centre  
 17 Foreshore Parade, Busselton  
 Monday – Sunday: 9am – 5pm  
 Telephone: (08) 9780 5911  
 Email: welcome@margaretriver.com

Explore the drive trails at [driveyourstory.com](http://driveyourstory.com)





# DUNSBOROUGH

## Let the coastline set the scene for you to savour, sip and indulge

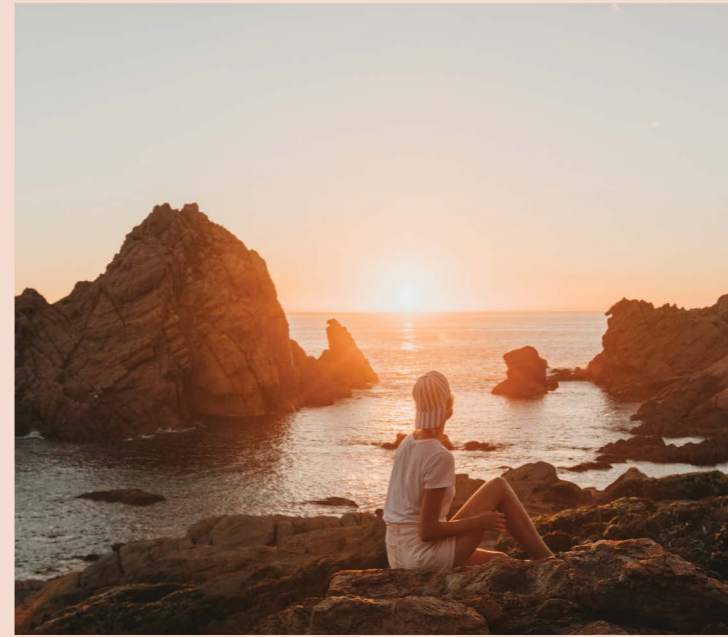
Welcome to the 'Cape Naturaliste' bubble – your own private island in the south west. This tiny corner of the world is flanked by the turquoise waters of secluded, lagoon-like bays on one side and dramatic, granite-lined surf-breaks on the other.

The canvas well and truly sets the scene for coast-to-coast indulgent living between Dunsborough and Yallingup. The daily schedule is unhurried. It looks like a surf or a swim, a hike on the Cape rewarded by a long lunch, an afternoon of sourcing gourmet produce, and finally, seeing out the day with a lazy glass in hand at your winery or brewery of choice.

You can experience the Cape region intimately, or join those who regularly return, calling it their own retreat – their home-away-from-home – albeit more spectacular.

### Highlights

- Cape Naturaliste
- Sugarloaf Rock
- Secluded lagoons
- Ngilgi Cave
- Picturesque drinking and dining
- Family-owned establishments



## SUGARLOAF ROCK

Sugarloaf Rock is a gigantic granite rock that emerges from the Indian Ocean extremely close to the mainland. The rock is situated within a designated nature reserve in the Leeuwin-Naturaliste National Park just off Cape Naturaliste near Dunsborough. As you approach Sugarloaf Rock you will instantly see why this towering, sea-sculptured rock is one of the most photographed coastal landforms in the region. With its ocean side often battered by treacherous seas, and the rock separated from the coast by a narrow channel of wild water, this is an incredible seascape – best viewed from the elevated lookout.

## Cape Naturaliste Lighthouse

Tours depart every half hour

9.30am – 4pm daily

Ph: 9757 7411 • 1267 Cape Naturaliste Rd, Naturaliste

[margaretriverlighthouses.com](http://margaretriverlighthouses.com)

One of the region's most popular attractions, with something for people of all ages and abilities. An easy climb of 59 stairs makes the lighthouse accessible even for small children. Guided tours give insight into the functions of the working lighthouse, where a fascinating maritime history of shipwrecks, the formidable coastline and the hardships of a lighthouse keeper are revealed.

The heritage precinct features a universal access platform at the base of the lighthouse with sweeping ocean views, plus landscaped lawns and a nautical-playground for visitors to linger or bring a picnic.

## Eagle Bay Brewing Co

7 days 11am – 5pm

Ph: 9755 3554 • 236 Eagle Bay Rd, Naturaliste  
[eaglebaybrewing.com.au](http://eaglebaybrewing.com.au)

A prime classy-yet-casual establishment, where its slick limestone and concrete architecture – overlooking farmland and the Indian Ocean – belies a world of fun. The business is a microbrewery, restaurant and vineyard tucked away on a family farm, where the proprietors (third-generation farming siblings) have a passion for sharing their love of handcrafted brews and local produce. Enjoy lunch or late afternoon drinks in a vibrant atmosphere, with six handcrafted brews to choose from.

## Happs

7 days 10am – 5pm

Ph: 9755 3300 • 575 Commonage Rd, Quindalup  
[happs.com.au](http://happs.com.au)

A family-owned winery that has been operating for more than 40 years. Perfect for the wine-curious and adventurous – discover varieties, styles and flavours in the region's only outdoor, self-serve wine-tasting venue that is free to everyone. The cellar door sits elevated on a hill of native forest, with beautiful grounds and lawn area where you can enjoy your favourite bottle of Happs with a delicious build-your-own gourmet picnic hamper. Or, if you are looking for a unique gift or keepsake, visit the pottery and art gallery where you'll find artists in residence and a selection of handicrafts and jewellery by local artists.



## Commonage Pottery

**7 days 10am – 5pm**  
**0404 377 359 • 575 Commonage Rd, Quindalup**  
[commonagepotteryandgallery.com.au](http://commonagepotteryandgallery.com.au)

A working pottery studio, art gallery and workshop space within Happs' winery. You will often find resident potters at work, or teaching workshops for both pottery initiates and dedicated students. Take a wander through the gallery where you'll discover a showcase of beautiful creations including paintings, sculptures and stunning jewellery all handcrafted by local artists. Ceramic styles vary from Raku to stoneware, crystalline glazes, woodfired and high-fired reduction glazes. The pottery classes are fun and are great to enjoy with your friends after a wine tasting. Check the website to book a class.

## Yallingup Cheese Company

**Wed- Sunday: 10am - 4:00pm (Sat - 5pm)**  
**Ph: 9755 2121**  
**1071 Wildwood Rd, Yallingup Siding**  
[yallingupcheese.com.au](http://yallingupcheese.com.au)

Cheese – from ooey, gooey to sometimes stinky (in the best way!) Yallingup Cheese Company definitely satisfies that craving. The hand-crafted artisanal cheese producer is inspired by authentic French cheese and runs a showroom inside Abbey Vale Wines. The cheeses are made from multiple weekly deliveries of local goat and organic cow milk, and used for production that day, sealing in those fresh creamy milk flavours. Pick a cheese (or three), buy a grazing box and enjoy the picturesque grounds with your newly-foraged picnic.

## Wild Hop Brewing Co.

**Monday - Thursday 11am – 5pm (kitchen closes at 4pm) Friday, Saturday, Sunday 10.45 am – 6 pm (kitchen closes at 5pm)**  
**Ph: 0488 990 154 • 1301 Wildwood Rd, Yallingup**  
[wildhopbeer.com.au](http://wildhopbeer.com.au)

Caters happily to the whole family, with grown-up brews, a modern casual setting overlooking epic views for the parents, a nature playground for the kids and even welcoming well-behaved pooches on leads. Wild Hop features a revolving list of seasonally-inspired craft beers as well as local wines and spirits. Its share-style menu centres around the wood fire, with signatures including the rotisserie chicken and tomahawk steak. There's a woodfire inside surrounded by comfy lounges, with a beautiful deck and plenty of outside seating or lawn lazing for those sunny afternoons.

## Wills Domain

**Restaurant:**  
**Thursday - Monday 12pm - 2.30pm**  
**Cellar Door:**  
**7 days from 10am to 5pm**  
**Ph: 9755 2327 • 17 Brash Rd, Yallingup**  
[willsdomain.com.au](http://willsdomain.com.au)

When dining alfresco at Wills Domain, one of the finest views in the Margaret River region is delivered, atop a hill overlooking the entire Gunyulgup Valley. As well as that vista, Wills Domain has a renowned restaurant, which works in perfect harmony with its award-winning wines. The restaurant is consistently one of the best-awarded in Western Australia – now helmed by acclaimed chef Jed Gerrard – where you can be delighted by a four or a seven-

course degustation menu. Bookings are essential.

## Windows Estate

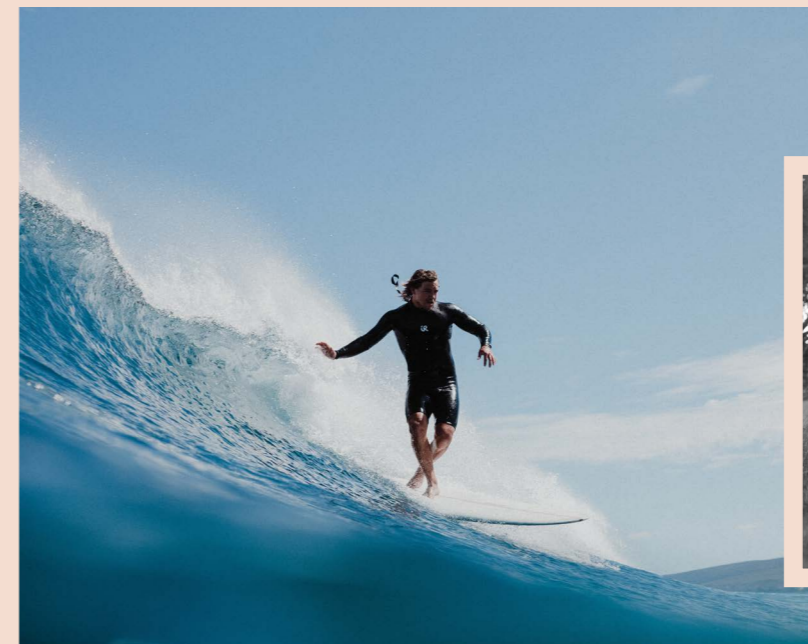
**7 days 10am – 5pm**  
**Ph: 9756 6655 • 4 Quininup Rd, Yallingup**  
[windowsestate.com](http://windowsestate.com)

Owned and run by multi-generational farmers who understand the importance of organics, Windows Estate is a beautiful rural property and award-winning cellar door set near native forest. The winery was awarded Best Small Cellar Door in Margaret River by Gourmet Traveller WINE magazine for several years running, and offers picnics, organic vineyard tours and cheese and wine pairings (in addition to cellar door visits). Owner Chris began farming this land at just 19, and is meticulous over the handling of his certified organic vines, being his life's work.

## Gabriel Chocolate

**Monday - Friday and Sunday 10am – 4:30pm**  
**Saturday 10am – 5pm**  
**Ph: 9756 6689 • Caves Rd & Quininup Rd, Yallingup**  
[gabrielchocolate.com.au](http://gabrielchocolate.com.au)

To visit Gabriel Chocolate is to travel the world one cacao bean at a time. The chocolate is taken seriously (being Western Australia's first bean-to-bar choc makers) and is a tad more grown up – single-origin sourcing is a staple here. Explore far flung chocolate destinations in the comfort of the gallery at Yallingup. Sit inside at the café or the outside veranda or lawn with Gabriel's award-winning chocolate creations, famous hot chocolate, decadent chocolate chunk cookie, chocolate inspired gelato or a choice of loaded coffee.



## Swings and Roundabouts Yallingup

**Monday – Thursday 10am – 5pm**  
**Friday – Sunday 10am – 6pm**  
**Ph: 9756 6640 • 2807 Caves Rd, Yallingup**  
[swings.com.au](http://swings.com.au)

Much-desired for a casual lunch and linger, often abuzz with its magnificent lawn, views and playground. The building itself is full of an artful timber interior, designed to mimic the feel of a wine barrel! Expect a friendly atmosphere, good music, open fires and cosy corners. Outside – sit at a picnic table, spread a blanket or take a spot at one of the most photo-worthy tables in the region, complete with actual swings for seats! The wines are plentiful and Mediterranean in style; the food is simple, flavourful and rustic to match.

## Marri Wood Park Biodynamic Vineyard

**7 days 11am - 4pm**  
**Also by appointment**  
**Ph: 0456 807 408 • 28 Whittle Rd, Yallingup**  
[marriwoodpark.com.au](http://marriwoodpark.com.au)

A boutique family-run and owned winery in Yallingup, located on Caves Road, a stone's throw from Smiths Beach. With a passion for the environment, the vineyard is managed with a biodynamic philosophy at heart. The winery utilises sustainable and chemical free practices when crafting the wine. The winery has recently opened a cellar door set among natural bush, where visitors can pop in to try the wines, with the open fire often going in winter. Call ahead to book a picnic or Yallingup Cheese board, borrow a blanket set and treat the kiddies to a gelato. It's rustic, charming and dog-friendly.





## Lagoon Yallingup

**Kiosk Monday - Friday 8am - 12pm**

**Saturday & Sunday 8am - 3pm**

**Restaurant Wednesday - Sunday 8am - 3pm**

**Ph: 9756 6999 • Unit 2/6 Dawson Dr, Yallingup**

**lagoonyallingup.com.au**

Relaxing, all white interiors and two-storeys of seafood-focused restaurant goodness metres from the sand at Yallingup. This makes Lagoon a no-fail combo for locals and visitors. Inside, the self-described 'refined casual' dining runs for breakfast and lunch (with limited edition seasonal dinners). The lunch menu especially is a celebration of local and native produce, where seafood is king. Wash it down with a prime selection of local vinos or a cocktail. If you're doing a quick stop, Lagoon has a kiosk overlooking the Yallingup foreshore park and playground, serving breakfast, lunch and takeaway hot food.

## Meelup Regional Park

The waters and landscape of Meelup Regional Park are like a dream – forested bush racing right up to the pristine shores of Geographe Bay, meeting secluded rocky bays and perfect white, sandy beaches. For just over 11 kilometres between Old Dunsborough and Bunker Bay, take your time in the park to find your own special spot, lay out your towel and your beach umbrella and do as much or as little as you like. The walk trails along this coastline commence in Dunsborough town, and are mostly flat and very accessible.

## Ngilgi Cave

**Tours depart every half hour 9.30 - 4pm daily**

**Ph: 9757 7411 • 76 Yallingup Caves Rd, Yallingup**

**margaretrivercaves.com**

Western Australia's first tourist attraction, and its popularity led to the construction of its namesake, the historic Caves House Hotel nearby. Ngilgi Cave lies in the pristine coastal corner of Yallingup, surrounded by peppermint and eucalyptus trees. Extensive boardwalks lead through the large chambers of this underground wonderland, impressively decorated by nature. There is a junior explorer's tunnel for the little ones, and the rare opportunity to handle cave crystals at the touch table.

At a constant temperature of 20°C, the cave is an ideal place to visit at any time of year.



## Koomal Dreaming

**Bookings on request**

**0412 415 355 • Yallingup Caves Rd, Yallingup**

**koomaldreaming.com.au**

Join Wadandi custodian Josh 'Koomal' Whiteland for an introduction to one of the world's oldest living cultures with his authentic, personal interpretation. Be moved by the skill and intensity of Josh's didgeridoo playing and fire-making, taste native foods, discover bush medicine and meet the animals, plants and Dreaming spirits that have enriched the lives of Wadandi and Bibbulman people since time began. Private Twilight Didgeridoo Cave Tours currently available for a truly unique experience, privately accessing Ngilgi Cave after it is closed to the public for the day.

## South West Eco Discoveries

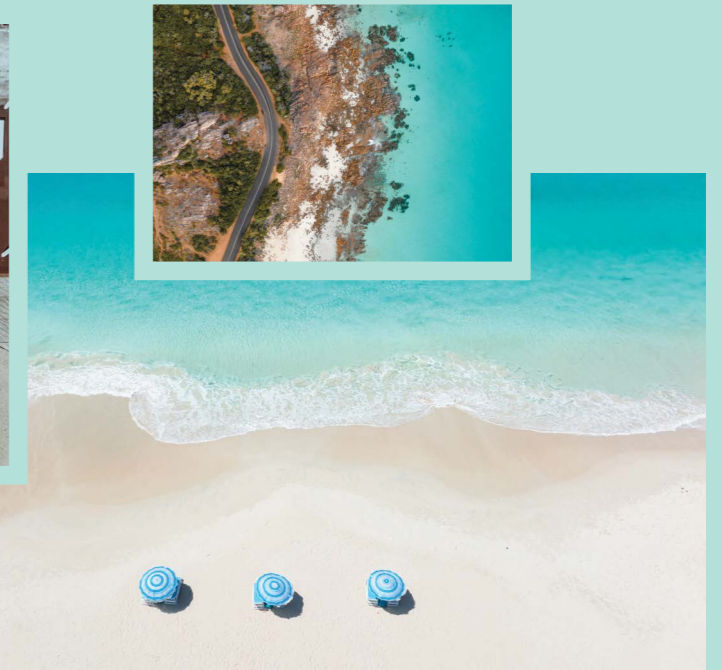
**Pickups from Busselton to Dunsborough at accommodation locations along Caves Road.**

**Pickups from Margaret River available on request and are subject to availability.**

**Ph: 0477 049 722**

**southwestecodiscoveries.com.au**

To scratch below the surface of the region and tap into the nature, the wildlife, the produce, then who better to guide you than two brothers, born and bred third generation locals? Sustainable nature and wildlife tours is the game at South West Eco Discoveries, where the motto is 'See, Taste, Discover'. Three different tours are on offer (all family-friendly) where you can see the sights of Geographe Bay above and below the water (wildflowers and marine life included), taste local produce, visit 2 stunning and contrasting wineries or discover a rare and unique nocturnal native animal.



## LOCAL GUIDES STAY

### Private Properties Holiday Homes

**privateproperties.com.au**

Beautiful architecture, jaw-dropping locations and creature comforts are all essential features of Private Properties Holiday Homes. With a portfolio of 100-plus options, Private Properties has inspirational accommodation for unforgettable holidays all covered. Beachfront in Eagle Bay and Bunker Bay, on Yallingup hill with 180 degree ocean vistas, rural retreats on acres of sweeping countryside, and in Busselton and Dunsborough with an easy stroll to the beach. Locally owned and operated with over 26 years' experience, their passionate team can find the perfect holiday home for you.

### Pullman Bunker Bay Resort

**42 Bunker Bay Road Off, Cape Naturaliste Rd, Naturaliste**  
**pullmanbunkerbayresort.com.au**

One of the most exclusive resorts in the region, lying right on the shores of Bunker Bay and surrounded by national park. The five-star luxury accommodation is 12 minutes from Dunsborough, but feels a world away with its access to hidden beaches and natural landscapes. The property is famous for indulgence with an outdoor heated infinity pool overlooking the ocean, the Other Side of the Moon Restaurant and Bar, and the nature-inspired Vie Spa. Architecturally designed villas offer privacy, bath tubs, outdoor courtyards or decks and boardwalks down to the water's edge.

### Smiths Beach Resort

**67 Smiths Beach Rd, Yallingup**  
**smithsbeachresort.com.au**

The ultimate beachside escape. Relax in spacious, stylish accommodation ideally situated in the heart of Western Australia's Margaret River Region. Savour understated style and receive individual attention at this Small Luxury Hotel of the World™. Enjoy the surrounding natural beauty, the stunning stretch of white sandy beach, coastal Cape to Cape walking trails, Lamont's gourmet deli, café and restaurant, infinity solar heated swimming pool, tennis court and neighbouring world-class wineries. The Resort offers a range of accommodation styles, some offering stunning panoramic ocean views.

### Wyadup Brook Cottages

**Ph: 9755 2294 • 33 Wyadup Rd, Yallingup**  
**wyadupbrook.com.au**

Experience a dose of rural farm life at Wyadup Brook Cottages, just around the corner from the Cape to Cape Track and Injidup Bay. The Wyadup Brook flows through the middle of this 100 hectare property complete with chooks, cows, wildlife and wildflowers. Surrounded by native peppermint trees, there are six uniquely crafted cottages to choose from, all self-contained including wood fireplaces to keep things toasty in winter. Located close to Caves Road for quick and easy access to Yallingup and Dunsborough.



# Harvest & Vines Trail

# DRIVE YOUR COWARAMUP STORY



## Visitor Information

Margaret River Visitor Centre  
 100 Bussell Hwy, Margaret River  
 Monday – Sunday: 9am – 5pm  
 Telephone: (08) 08 9780 5911  
 Email: welcome@margaretriver.com

Explore the drive trails at [driveyourstory.com](http://driveyourstory.com)



## MARGARET RIVER REGION

ON WADANDI BOODJA

KEY	Icon	Label
Brewery		Brewery
Winery		Winery
Winery with Restaurant		Winery with Restaurant
Local produce		Local produce
Accommodation		Accommodation
Attraction		Attraction
Swimming		Swimming
Surfing		Surfing
Natural Attraction		Natural Attraction
Lighthouse		Lighthouse






# COWARAMUP

## The golden triangle of land, labour & love.

Almost like a golden triangle of winemaking, the humble area between Gracetown & Cowaramup, known as Wilyabrup, is where locals and visitors go to live like kings. The land is bountiful and giving. It's the region's powerhouse of vineyards, farming, working families & artisan production.

Once a land of milk (literally), there's now honey and wine. The landscape is one of rolling fields, hay bales and lush vineyards bordered by virgin native bushland. Those who visit have no choice but to witness the seasons first-hand and are compelled to meet the makers, see the production and sample the fruits of land, labour & love. It's like all roads lead to this special pilgrimage.

Old secrets of winemaking, brewing, distilling and tempering are whispered here. Of course, days end at the coast, and in this case, it's Gracetown's Cowaramup Bay, where the sun sets into the water.

## Highlights

- Caves Road
- Vineyard views
- Meet the makers
- Wineries, breweries and distilleries
- Gracetown Beach



## GRACETOWN BEACH

The centre of life in this tiny coastal town – an eclectic hillside of old pastel surf shacks and modern holiday homes heading right down to the sea. Cowaramup Bay (as it's known to locals) is flanked by a surf break at each end of its 'U' shape, with a protected family beach tucked nicely at the bottom of the bay. The Cape to Cape walk along here is dotted with boardwalks, staircases and seating platforms taking advantage of the views. The bay is perfect for most seaside activities, with the must-do being sunset over the water.

## Caves Road

Caves Road is one of the most scenic and beautiful drives in Australia, with 111 kilometres of tunnel-like forest, row upon row of grape vines and rolling hilly paddocks. It's like the life-giving artery to the whole region, housing many of its wineries and attractions, while being the thoroughfare to a majority of the South West's beaches. The road begins just west of Busselton and ends in Augusta, running more or less from Cape Naturaliste down to Cape Leeuwin. It is impossible to visit the Margaret River Region without travelling along at least some length of this iconic drive.

## Cullen Wines

**7 days 10am – 4.30pm**  
**Ph: 9755 5277 • 4323 Caves Rd, Wilyabrup**  
[cullenwines.com.au](http://cullenwines.com.au)

One of the most awarded wineries in Margaret River and one of the founding estates in the region. Quality, integrity and sustainability are the mantras lived and breathed here under the meticulous stewardship of winemaker Vanya Cullen. The family's iconic Caves Road headquarters includes the Biodynamic Wine Room, seated and hosted wine tasting experiences and fine dining fully serviced by the biodynamic kitchen garden. Adjoining the vineyard outside, there is a self-guided spiral garden that teaches about the biodynamic processes and principles.

## Woodlands Wines

**7 days 10am – 5pm**  
**Ph: 9755 6226 • 3948 Caves Rd, Wilyabrup**  
[woodlandswines.com.au](http://woodlandswines.com.au)

Born in 1973 (one of the first five vineyards of Margaret River) from a love for French Bordeaux Cabernet blends, and the Watson's family dream to create a legacy red wine of their own. The cellar door is home to a newly-renovated space with views of the vineyard, the working winery and the barrel hall. The wines are made from 10 hectares of certified organic vineyard, with a variety of tasting options (including some prestigious museum wines). Grazing boards are available, as well as picnics on the lawn in summer.

## Black Brewing Co

**7 days 11am – 5pm**  
**Ph: 9755 6500 • 3517 Caves Rd, Wilyabrup**  
[blackbrewingco.com.au](http://blackbrewingco.com.au)

A beverage haven along Caves Road, noteworthy for its huge dam and magnificent, architecturally-awarded building. The beer garden is extensive, as is the wrap-around veranda (with adjoining playground), which takes in the water and bushland views. The craft beers are brewed in house, there's a delicious menu of pared-back shared dishes and pizzas, and the gins are inspired by the local terrain and native flora.

## Clairault Streicker Wines

**Wednesday – Sunday**  
**10am – 5pm**  
**Ph: 9755 6225 • 3277 Caves Rd, Wilyabrup**  
[clairaultstreickerwines.com.au](http://clairaultstreickerwines.com.au)

A lush, verdant cellar door surrounded by tall gum trees that offer shade on a warm summer day. Inside, seated wine tastings take place alongside a vineyard kitchen that turns out modern casual dining. Enjoy a meal under the veranda or out on a picnic rug with some lawn games. Beyond the cellar door, there are specialties like the wine blending experience or a private vineyard picnic. The family-owned outfit oversees four distinct, historic vineyards within the Margaret River area to craft its authentic fine wine.



### **Vasse Virgin**

**7 days 10am – 5pm**  
**Ph: 9755 6111 • 135 Puzey Road, Wilyabrup**  
[Vassevirgin.com.au](http://Vassevirgin.com.au)

A mecca for indulgent natural skincare products, gourmet pantry produce and of course, rich olive oil. A treat for the senses, where you can flit around like a hummingbird trying a fragrant soap here, a hand scrub there or deli products like tapenades or the cult macadamia pesto (among many other delights). From the showroom you can witness the hand blending of natural body products with luxurious extra virgin olive oil. Vasse Virgin holds a range of workshops and masterclasses, like olive oil tastings or crafting natural products.

### **Domaine Naturaliste**

**7 days 10am – 5pm**  
**Ph: 9755 6776 • 160 Johnson Rd, Wilyabrup**  
[domainenaturaliste.com.au](http://domainenaturaliste.com.au)

Noteworthy for its sheer proximity to the vineyard – surprisingly a rarity in the region (think head-height Merlot vines planted right outside). This provides an ever-changing backdrop to cellar door from one season to the next. The space is quite literally the domain (pun intended) of acclaimed winemaker Bruce Dukes and is designed for ultimate relaxation. It's the perfect setting for Domaine Naturaliste's wine flight: six wines presented at a seated tasting with personalised guidance from cellar door staff. Charcuterie and cheese boards are available.



### **Woody Nook Wines and The Nookery Café**

**7 days Cellar Door 10am – 4.30pm •**  
**Café 8.30am – 3.30pm**  
**Ph: 9755 7547 • 506 Metricup Rd, Wilyabrup**  
[woodynook.com.au](http://woodynook.com.au)

A mudbrick cottage nestled against a backdrop of marri and jarrah forest and brimming with country charm. The vineyard and winery property, prides itself on being family-owned and unpretentious, but achieving consistent acclaim for its premium wines. The Nookery Café has a rustic relaxing atmosphere with both cosy indoor seating and an all weather alfresco dining area. It serves breakfast and delicious, wholesome lunches including a popular loaded taste plate. Children are welcome with their own menu and grassy play area with swings.

### **Fraser Gallop Estate**

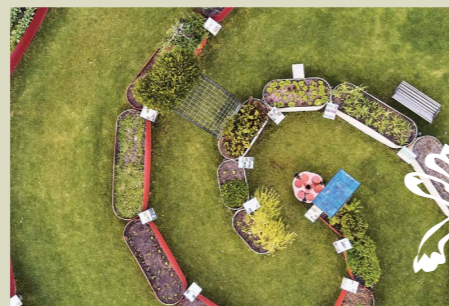
**7 days 11am – 4pm**  
**Ph: 9755 7553 • 493 Metricup Rd, Wilybrup**  
[frasergallopestate.com.au](http://frasergallopestate.com.au)

Fraser Gallop Estate has just "one vigneron, one vineyard and one vision: to capture the essence of Wilyabrup." This estate produces wines of exceptional quality and value and has picked up arguably the highest international gongs for its Cabernet Sauvignon and Chardonnay. Visit their cellar door or immerse yourself in 'A Taste of the Vineyard' experience, gently touring the manicured gardens of the iconic Gallop House in a solar-powered EV buggy, sipping the Parterre wine range at picturesque locations along the way.

### **The Grove Distillery**

**Tuesday – Sunday 9am – 5pm**  
**Ph: 9755 7458 • 491 Metricup Road, Wilyabrup**  
[thegrovedistillery.com.au](http://thegrovedistillery.com.au)

The first of its kind established in the Margaret River Region, and is known for its prolific experimental range of spirits, and a fun and eclectic tasting experience. The Grove pushes boundaries when exploring new flavours and methods of production. Visit the cellar door to taste for yourself, or book a Talk and Taste tour. The drinks line-up ranges from Organic Absinthe to Coconut Rum, Honey Corn-Mash Whiskey, Single Malt Whiskey, Limoncello, Nocino, Gin, Vodka and much more.



### **Churchview Estate**

**Monday – Saturday**  
**10am – 5pm**  
**Ph: 9755 7200 • 8 Gale Rd, Metricup**  
[churchview.com.au](http://churchview.com.au)

So-called because it lies opposite the historical, picturesque (and tiny!) St John the Baptist Anglican Church on Bussell Highway, which is an icon landmark on your drive into the Margaret River Region. The winery is now certified fully organic, driven by principles of cultivating, crafting and cherishing the land. Beyond the cellar door tasting, visitors can book a ploughman's lunch or a fully stocked picnic in the vines for two.

### **Beerfarm**

**Open every day from 11am**  
**Ph: 9755 7177 • 177 Gale Rd, Metricup**  
[beerfarm.com.au](http://beerfarm.com.au)

A rustic brewery with country charm in spades, on the site of a converted dairy farm. From the beer hall itself (complete with rusty tin roof), open wood fire, to the craft beer, barbecue food by Burnt Ends Smoking Co and scenic 120 acre views, rollicking good times abound. The whole place has a sprinkling of cowboy – as evidenced by the neighbouring Black Angus cattle herd that helps supply the menu.

### **Three Lily's Gin and Sweet Treats**

**7 days 10am – 5pm**  
**Ph: 0402 890 880 • 5 Harmans Mill Rd, Metricup**  
[threelilys.com.au](http://threelilys.com.au)

Sweet wines have a cult following...consider this their church! While most wineries might do one or two sweet or dessert vinos, this is the specialty at Three Lily's Gin, along with its namesake spirit, which is available in its classic form or with a ginger, mango, lemon, lime, chilli, Pina Colada or fruit infused twist! Sweet lovers of all ages are welcome, with the wine, gin, liqueurs, lollies and gourmet foods enticing the whole family to come and relax.

### **Margaret River Nuts and Cereals**

**7 days 9:30am – 4:30 pm**  
**Ph: 9755 6772 • 219 Harmans Mill Rd, Metricup**  
[mnrnuts.com.au](http://mnrnuts.com.au)

Harmans Mill Road, just outside Cowaramup, is renowned for its variety of local produce outside of wine. It's a picker's and forager's delight – and Margaret River Nuts and Cereals adds to the diversity. Fill your pantry with honey, chocolate and yoghurt-coated nuts, a wide range of muesli, preserves, chutneys, pickles, onions, sauces and spices. The onsite café makes coffee, tea, homemade cakes, cookies and snacks, and there is seating for all weather and a play area for the kids.

### **Wow Illusions**

**Monday – Sunday**  
**9:30am – 4:30pm**  
**Ph: 9755 6772 • 219 Harmans Mill Rd, Metricup**  
[Wowillusions.com.au](http://Wowillusions.com.au)

Here is a treat to break up the day for the kids (or the kids at heart). Wow Illusions is a collection of weird effects and puzzling eccentricity. Its brightly coloured exterior is unmissable along your drive, and inside the trickery includes a gravity defying room, illusionary artworks, levitating illusions, distorted rooms, various mazes and more.

### **The Margaret River Chocolate Company**

**7 days 9am – 5pm**  
**415 Harmans Mill Rd & Tom Cullity Dr, Metricup**  
**Ph: 9755 6555 • [chocolatefactory.com.au](http://chocolatefactory.com.au)**

This was the first chocolate company in the Margaret River Region – the one that brought a whole new genre to the world of gourmet food and wine. Since 1999 it has been going strong as a Western Australian icon, hand-making chocolate products and giving away free chocolate tastings to millions of customers. Inside the magical walls, there are more than 200 choc products for sale, the aforementioned free tastings, viewing windows into the factory and a café serving desserts, drinks and light meals.





### **Bettenay Wines and Margaret River Nougat**

**Monday – Sunday 10am – 5pm**  
**Ph: 9755 5539 • 248 Tom Cullity Dr, Cowaramup**  
**bettenaysmargaretriver.com.au**

The onsite winery and nougat factory is just part of the package – Bettenays has a list of exciting experiences, a café of drinks and treats, plus games and activities for the family to enjoy at the vineyard and lakeside cellar door. Wine connoisseurs, sweet tooths or even morning coffee drinkers are welcome to pop in. Check online for their decadent experiences, including nougat-toasting, liquor-spiked hot chocolate, nougat and wine matching, grazing boards, private tours or brunch.

### **Cowaramup Brewing Company**

**Sunday – Friday 11am – 5pm**  
**Saturday 11am – 6pm**  
**Ph: 9755 5822 • 229 North Treeton Road, Cowaramup**  
**Cowaramupbrewing.com.au**

A true rural beer experience, inside a bright rammed earth and timber building overlooking farm country. Take a look at the working brewery on site, or pre-book a tour to get the full experience. The bar and restaurant opens onto a wide wooden deck, the best vantage point to take in the lawned beer garden, playground and dam, with wide vistas of the neighbouring rural farmland and vineyards.

### **Cape Grace Wines**

**7 days 10am–5pm**  
**Ph: 9755 5669 • 281 Fifty One Rd, Cowaramup**  
**capegracewines.com.au**

One of the great 'little' wineries of Margaret River that is family owned and operated. Enjoy a friendly, intimate and authentic cellar door experience – the basket pressed red wines are a highlight. See behind the scenes and learn how the extensive variety of small batch wines are made, which are available only from the tin shed winery. The Karri-Davies family has a history in the area spanning back to 1875, including the founding of Margaret River and the building of Cape Leeuwin Lighthouse.

### **Margaret River Providore**

**7 Days 9am – 5pm**  
**448 Tom Cullity Dr, Metricup**  
**Ph: 9755 6355 • providore.com.au**

Home to a gourmet pantry range of the same name, plus Coward and Black wines and the Margaret River Coffee Company. The beautiful rammed earth building is neighboured by a vineyard on one side and a herb and vegetable garden on the other, from which it creates its range of farm fresh gourmet products. Kitchen aficionados can peruse the shelves of ingredients and homewares, and appreciate the onsite organic olive grove, orchard and vegetable gardens.

### **The Colony Concept – Southern Forests Honey**

**7 days 10am – 4pm**  
**Ph: 9755 7777 • 62 Harman's Mill Rd, Metricup**  
**southernforesthoney.com.au**

A sustainable honeybee farm and the home of Southern Forests Honey, which produces 10 different local varieties of honey, nine types of mead medicinal honey and the Heart of the Hive beauty Skin Care products. Not-for-profit organisation Foodlosophy runs the 120-seat restaurant here, creating community with food, using sustainable produce from friends and farmers within 100 km of the kitchen gate. There's plenty of space for families to spread their wings indoors or outside in the nature playground beside the vast farmland backdrop.



### **Fermoy Estate**

**7 days 11am – 5pm**  
**Ph: 1300 133 766 • 838 Metricup Rd, Wilyabrup**  
**fermoy.com.au**

With its buildings painted a Mediterranean hue of salmon, and surrounded by olive trees, Fermoy Estate is a landmark on Metricup Road. Is this the South of France, Italy? It seems like it! The grounds are best enjoyed with a glass or bottle of wine at the picnic tables. The wines themselves have taken out some massive international gongs, and the Cabernet Sauvignon was most prestigiously poured at the royal wedding reception of Princess Mary to Prince Frederik of Denmark.



### **Howard Park Wines**

**7 days 10am – 5pm**  
**Ph: 9756 5200 • 543 Miamup Rd, Cowaramup**  
**howardparkwines.com.au**

A striking, architecturally-awarded cellar door in Margaret River, noted for its Feng Shui design principles. The vast lawn and grounds provide the perfect backdrop to enjoy the range of tasting experiences (including some knockout private seated, museum wine tastings). Howard Park is a specialist in the Margaret River and Great Southern wine regions and the home of sparkling in Margaret River, crafting a variety of champagne-method bubbles in-house. Create your own picnic platter from a gourmet regional selection to enjoy during your visit.



## **STAY**



### **Cape Lodge**

**Ph: 9755 6311 • 3341 Caves Rd, Yallingup**  
**capelodge.com.au**

The epitome of luxury accommodation in Margaret River, with the appearance of a private country estate, but the trappings of a world class boutique hotel. The rooms are centred around a picturesque lake and forest, surrounded by manicured grounds, pool, a waterside restaurant and vineyard. The fine dining restaurant is available to guests for inclusive private breakfast, and open to the public for dinners, special events and the signature Cape Lodge cooking school with renowned chef Tony Howell.

### **Eight Willows Retreat**

**Ph: 9755 7575 • 266 Metricup Rd, Metricup**  
**eightwillowsretreat.com.au**

The entry into Eight Willows Retreat is striking; a winding driveway that crosses a lake, surrounded by native bushland, with a scenic gazebo perched over the water. Here, 25 self-contained chalets are set on 75 acres of pristine nature, with each positioned for maximum privacy. The Retreat is located away from the hustle and bustle of towns for a secluded and relaxing stay. Choose from one or two bedroom chalets as well as one grand 10-person country residence.

Surf & Source Trail

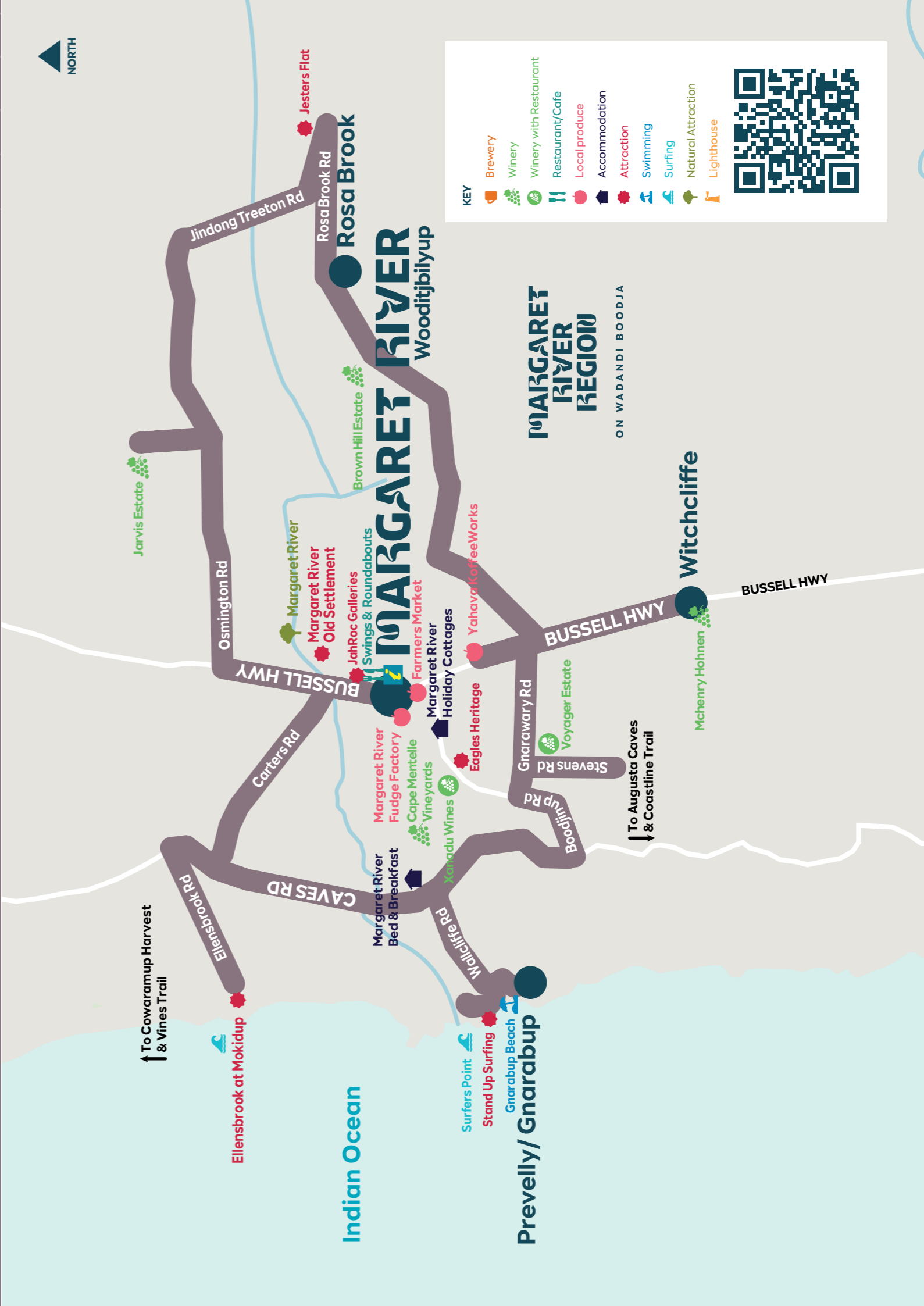
# DRIVE YOUR MARGARET RIVER STORY



### Visitor Information

Busselton Visitor Centre  
17 Foreshore Parade, Busselton  
Monday - Sunday: 9am - 5pm  
Telephone: (08) 9780 5911  
Email: welcome@margaretriver.com

Explore the drive trails at [driveyourstory.com](http://driveyourstory.com)



# MARGARET RIVER

## The land's life source.

Like the beginning and end of something much greater, the fresh waters of the Margaret River flow through land, forest and out to sea, sharing life and vitality to all who encounter it.

It is a magic felt in the earth and the people. The experiences are as varied and unique as the inhabitants. But that's the common thread in Margaret River: a connection to place and a contribution to the culture, no matter your background. It's an area of character and characters. Here, legacy wine producers rub shoulders with old salty surfers, tree changers, nature-lovers, enterprising families and artists.

Visitors come to grasp a slice of this life, but many stay to add their own thread to the intricate tapestry. Trickle, current, vine, forest, rivermouth, ocean.

## Highlights

- The Margaret River
- Walking and riding trails
- Gnarabup Beach
- Surfers Point
- Iconic and small family-owned wineries
- Heritage and history

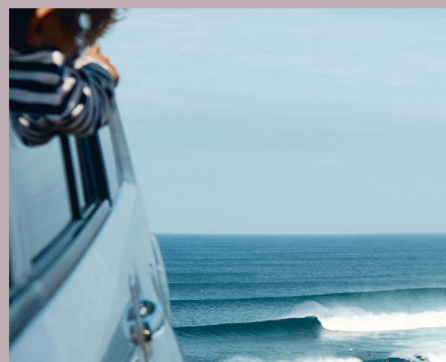


## GNARABUP BEACH

Despite bordering Margaret River's most famous surf breaks, Gnarabup Beach (just south of Prevelly) is an oasis of calm waters, boating, fishing, paddling and snorkelling. It is certainly the locals drop-in spot for their daily swim, walking the dog or popping down for a coffee and a bite at the ever-popular White Elephant Café. The swell of the west coast is hampered by an outer reef, which creates the lagoon-like conditions at the beach, sheltered on one side by a spectacular limestone headland. A walk trail over the top gives vivid views of the whole area.

## SURFERS POINT

When you think surf in Margaret River, you should be thinking of Surfers Point. The World Surf League's Margaret River Pro is held here every year. Name your favourite Australian or international surfer and guaranteed they have gotten wet at Surfers Point. In addition to its desirable conditions, the Point is arguably the most popular sunset spot in the area. A grassy hill lies high above the water, making a natural grandstand to sit and watch the surfers (or when the wind is in, kite and windsurfers), the sun setting or to enjoy a picnic from a local food truck.



## Stand Up Surfing

**November to April only. 7 days 8am – 12pm**  
**Ph: 0447 923 811 • Gnarabup Beach, Gnarabup**  
**standupsurfing.com.au**

Join Stand Up Surfing for a morning paddle at one of Margaret River's best-loved beaches. There are 60–90-minute sessions available to everyone from eight years of age, with instructors there to help you every step of the way (each with a world standard qualification and being trained lifeguards). Otherwise, join a small tour followed by breakfast at the picturesque beachside White Elephant Café. Stand Up Surfing is run by extended family with three generations involved.

## Ellensbrook at Mokidup

**Thursday – Saturday 10am – 4pm**  
**Sunday and public holiday tours at 10.30**  
**(please book online)**  
**Ph: 9755 5173 • Ellen Brook Rd, Margaret River**  
**ellensbrook.com.au**

A beautiful and peaceful place of historical and cultural significance, set into the coastal landscape and surrounded by lush forest. This is a place where nature and cultures merge, managed by the National Trust of Western Australia. The house was built in 1857 and is a testament to traditional Wadandi knowledge and settler ingenuity. Their stories tell of dispossession, opportunity, hard work, resilience, perseverance and changing ways of life. The grounds have a large lawn area and shady trees by a waterway, with bush walk trails leaving from the site.

## Margaret River Old Settlement

**Tuesday 10am – 12:30pm**  
**Thursday 1:30pm – 4:00pm**  
**Saturday – Sunday 10am until 3pm**  
**69 Bussell Hwy, Margaret River**  
**mrdhs.com.au**

An immersion in the life of the region's early working families through history, artefacts and photography. Find the Museum on the forested banks of Margaret River right in town, in the original 1925 Bramley School and Group Settlement buildings. There is a great collection of paraphernalia and changing displays dedicated to the 1921 – 1935 time period. The grounds are dotted with farming implements, tools, carts, an old dairy, 'dunny' and a milk shed. The Hairy Marron Café next door is perfect for a cuppa after your visit.

## Margaret River Fudge Factory

**Wednesday – 10am – 4pm**  
**Thursday – Saturday 9.30am – 4.30pm**  
**Sunday 10am – 2pm**  
**Ph: 9758 8881 • 152 Bussell Hwy, Margaret River**  
**fudgefactory.com.au**

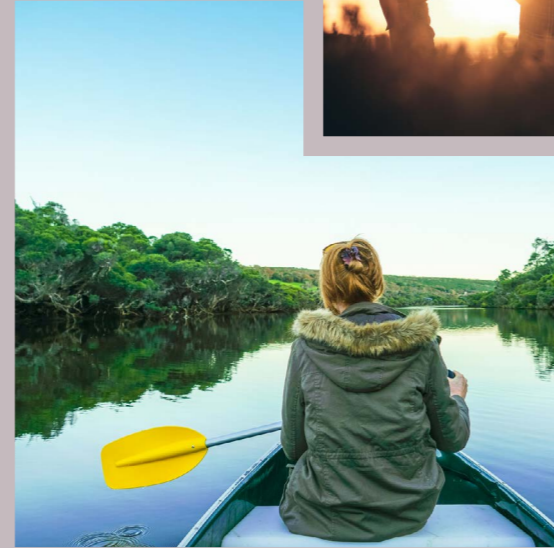
An oasis of sweet treats on the main street of town. See premium homemade fudge and chocolate being made by hand in the showroom. The factory is family-friendly and free to visit, with tasty samples on offer. There is a range of traditional chocolate and candy products for sale. The onsite café makes teas, coffees and traditional milkshakes to accompany your fudge-making viewing! An ideal stop for kids and sweet tooths.

## Swings and Roundabouts Margaret River

**7 days from 3pm**  
**Ph: 9758 7155 • 85 Bussell Hwy, Margaret River**  
**swings.com.au**

'Swings' in Margaret River captures all the laid back, jovial spirit of the Yallingup headquarters, right down to its wine barrel-inspired interior and warm, friendly service. It's the perfect place to rest weary feet after a long day exploring the region. Expect casual but comforting woodfired pizzas and Mediterranean share plates, Swings and Roundabouts wines on tap, the premium Backyard Stories label, WA spirits and curated craft beers. Swings is the local's local, where everyone is welcome.





### **JahRoc Galleries**

**7 days 10am – 5pm**  
**Ph: 9758 7200 • 83 Bussell Hwy, Margaret River**  
[jahroc.com.au](http://jahroc.com.au)

One of the most prominent art galleries in Margaret River, sitting at the town's entrance, and is well known for its diverse fine art, jewellery and cutting-edge furniture designs. The gallery represents local and Australia wide artists, alongside their own exclusive wooden furniture range, and also showcase the extremely rare Pink Diamonds from the Argyle mine. JahRoc Furniture was founded in 1987 by master furniture designers and makers Gary Bennett and David Paris, who use ethically sourced local hardwoods to create their award-winning designs.

### **Margaret River Farmers Market**

**Every Saturday 8am – 11.30am**  
**Lot 272 Bussell Hwy, Margaret River**  
[margaretriverfarmersmarket.com.au](http://margaretriverfarmersmarket.com.au)

The award-winning Margaret River Farmers Market is a firm weekly fixture and a must-do, to be immersed in one of the most authentic local experiences. The market connects hard-working farmers within Margaret River (or just beyond; specifically within the southwest appellation) with consumers. Shop according to the seasons, supporting local, connecting to the community, lowering food miles and cutting out the middle man. The markets took out the 2018 Delicious Awards Most Outstanding Farmers' Market in Australia and boasts only fresh food and cut flowers, with stallholders personally involved in the production of their food.

### **Jarvis Estate**

**7 days 11am – 5pm**  
**Ph: 0400 588 000 • 790 Wurring Rd, Bramley**  
[jarvisestate.com.au](http://jarvisestate.com.au)

Offering something a bit different on top of the usual cellar door visit: free vineyard tours. This is a small, family-owned boutique winery off the beaten track (but still just 10 minutes from Margaret River). Guests are greeted by the winemaker and owner for a personalised tour of the award-winning winery. Check out local artwork at cellar door, or bring your own picnic to enjoy with a bottle of wine in the gardens. All the grapes are grown, fermented and bottled entirely on the property.

### **Jesters Flat**

**Open 6 days a week, closed Thursdays**  
**Ph: 9757 4562 • 1549 Rosa Brook Rd, Margaret River**  
[jestersflat.com](http://jestersflat.com) (bookings essential)

A rural equestrian farm specialising in horse riding experiences on and off the property. The rustic country clubhouse and play area was designed for non-riding guests to enjoy themselves; the campfire in winter or the shady gardens in summer. For everyone else, this is the premium horse-riding adventure destination in the south west. Treks visit beaches, breweries, wineries and secluded waterholes with all equipment supplied, run by knowledgeable and experienced guides. Riders of all levels are welcome to spend some time upon the herd of beautifully trained Australian stock horses.

### **Brown Hill Estate**

**7 Days 10am – 5pm**  
**Ph: 1800 185 044 • 925 Rosa Brook Rd, Rosa Brook**  
[brownhillestate.com.au](http://brownhillestate.com.au)

A proudly small single site, family-owned and run winery that lies 12 minutes from Margaret River near the rustic village of Rosa Brook. The cellar door is set up right in the winery itself and operated by members of the family. See the winemaking process firsthand according to the comings and goings at different times of year. Try one of the three ranges in a wine tasting, book a winery tour or barrel hall tasting. See and learn why 'great wine is made in the vineyard'.

### **Yahava KoffeeWorks Margaret River**

**Monday - Friday 6am - 4:30pm**  
**Saturday, Sunday & Public Holidays: 7:00am until 4:30pm**  
**Ph: 9757 2900 • 2 Andrews Way, Margaret River**  
[yahava.com.au](http://yahava.com.au)

A wonderland of coffee just outside Margaret River. The one-stop-shop (with the most heavenly smell) has a roastery, tasting benches, brewing equipment displays, a coffee market, daily roasting and more. The crew can take you on a tasting where you will learn the origin of coffee all the way to your cup, or book in for a Koffee Safari, which lets you roast your own coffee and learn different brewing methods.

### **Cape Mentelle Vineyards**

**7 days 10am – 5pm**  
**Ph: 9757 0888 • 331 Wallcliffe Rd, Margaret River**  
[capementelle.com.au](http://capementelle.com.au)

One of the founding wineries of Margaret River (and closest to the township itself). A true pioneer, Cape Mentelle was a first in the region to offer Behind the Scenes visits to guests. Recently awarded Best Tasting Experience by Gourmet Traveller Wine, the cellar door now has a range of tour and tasting options, including picnics and wine flights in the native gardens. The famous outdoor movie cinema 'Movies at Cape Mentelle' is an iconic event on the summer calendar.



### **Xanadu Wines**

**Cellar Door 7 days 10am – 5pm**  
**Restaurant Wed – Sun from 11.45am**  
**Ph: 9758 9500 • 316 Boodjidup Rd, Margaret River**  
[xanaduwines.com](http://xanaduwines.com)

Founded in 1977, Xanadu takes an intuitive approach to winemaking, holding a deep respect for the vineyards and each individual site. The grounds cater to a relaxed and family-friendly crowd where the cellar door and restaurant take in the view of the Lagan Vineyard and a large, grassed courtyard, providing multiple tasting settings. Book ahead for a winery tour or tastings where you can add a selection of local cheeses, olives, and regional eats. Or head into the Xanadu Restaurant, where the food is inspired by local producers, the coast, and seasonal vegetables.







### Voyager Estate

**Opening hours: Please visit website**  
**Ph: 9757 6354 • 41 Stevens Rd, Margaret River**  
[voyagerestate.com.au](http://voyagerestate.com.au)

A second-generation family-owned estate in Margaret River. Amidst a sanctuary of lush gardens and rolling lawns, the Cellar Door is housed in a beautiful, white-washed Cape Dutch Manor House, all ringed by Estate vineyards and the majestic Marris beyond, setting the tone for the visit. Inside is the base for Voyager's extensive wine tasting options, behind-the-scenes tours and gastronomic degustation experiences. The luxurious yet intimate Wine Room is a focal point for vinous-focused visits. The vineyard has recently transitioned to certified organic, cementing the reputation of its Cabernet and Chardonnay varieties.

### Eagles Heritage Wildlife Centre

**Open Thursday to Monday 10am - 4 pm**  
**7 Days During WA School Holidays**  
**Ph: 9780 5979 • 341 Boodjidup Rd,**  
**Margaret River**  
[eaglesheritage.com.au](http://eaglesheritage.com.au)

A bushland sanctuary which offers the rare opportunity to get closer than you ever imagined to Australia's birds of prey. Stop by for one of the twice daily Birds of Prey Encounters, a compelling experience that allows you to observe the bird's natural behaviours and have your photograph taken with a barn owl. Take an easy hike down one of the native forest trails to meet the resident eagles, hawks, falcons, and owls. Eagles Heritage cares for injured, orphaned and displaced raptors and the admission price supports the centre's education, rehabilitation and endangered species breeding program.

### McHenry Hohnen

**7 days 10.30am - 4.30pm**  
**10406 Bussell Hwy, Witchcliffe**  
[mchenryhohnen.com.au](http://mchenryhohnen.com.au)

A unique pop-up cellar door in the charming and characterful town of Witchcliffe, a few minutes south of Margaret River. The winery is focused on biodynamic farming, limited intervention winemaking and single vineyard wines. The cellar door is casual and intimate, inviting you right in off the main street of Bussell Highway. Inside, taste and learn about the winery's ecological, practical and socially-responsible practices. McHenry Hohnen is a family-owned endeavour that runs three distinct vineyards in the Margaret River region.



### WHERE TO STAY

#### Margaret River Bed and Breakfast

**15 Loaring Pl, Margaret River**  
[margaretriverbnb.com](http://margaretriverbnb.com)

The ideal springboard for exploring the region, just off Caves Road with a quick route to town on one side and the area's most famous surf beaches on the other. The B&B has four resort-style rooms among nine acres of native forest. Each has its own veranda and double jacuzzi fronting onto lawn and bushland. The bright common room has floor-to-ceiling windows, multiple cosy seating options and gallery walls with works available to purchase from West Australian artists.

#### Margaret River Holiday Cottages

**185 Boodjidup Rd, Margaret River**  
[margaretriverholidaycottages.com](http://margaretriverholidaycottages.com)

The perfect destination to switch off, slow down and have an authentic country experience. There are three options of accommodation for everyone from travelling couples to work groups and families, with a great range of facilities (the communal firepit, indoor heated swimming pool, playground, nature and cycle trails are highlights). Here you have 12 acres of bush gardens neighbouring state forest to explore. The Cottages house a menagerie of transient and orphaned animals (whom you can feed!) – miniature Irish donkeys, sheep, alpacas, a calf, chickens and ducks.

#### Walk Talk Taste Gourmet Glamp

[walktalktaste.com](http://walktalktaste.com)

A curated gourmet glamping experience for lovers of premium artisan fare and wilderness-infused luxury. This private sanctuary is nestled amidst rolling vineyards and forest, with a sumptuously furnished bell tent laden with all the comforts you deserve including antique bush bath and copper outdoor shower. Guests are welcomed with gourmet local produce, starring craft gin, beer, and of course, fine wine. Sumptuously furnished for comfort, intimacy and warmth, this is bush luxe at its finest, a true Margaret River immersion by the campfire in the heart of premium wine country.



### LOCAL GUIDES

#### Margaret River Discovery Co

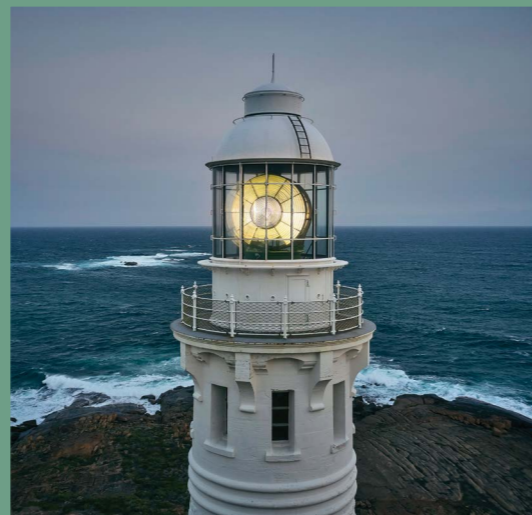
[margaretriverdiscovery.com.au](http://margaretriverdiscovery.com.au)

Specialising in personalised touring for people who 'don't do tours', chaperoned by award-winning guide Sean Blocksidge. It's luxury touring for nature and wine lovers aboard Sean's Landrover Discovery 4WD for a maximum of six guests. Canoe the actual Margaret River (without getting dirty or wet). Visit the Cape to Cape Track, with a side of cliffs, wildlife-spotting and lunch at Fraser Gallop Estate, with VIP access into the winery and vineyard. This has been rated as the number one Margaret River tour experience on Tripadvisor for 13 consecutive years.



# Caves and Coastline Trail

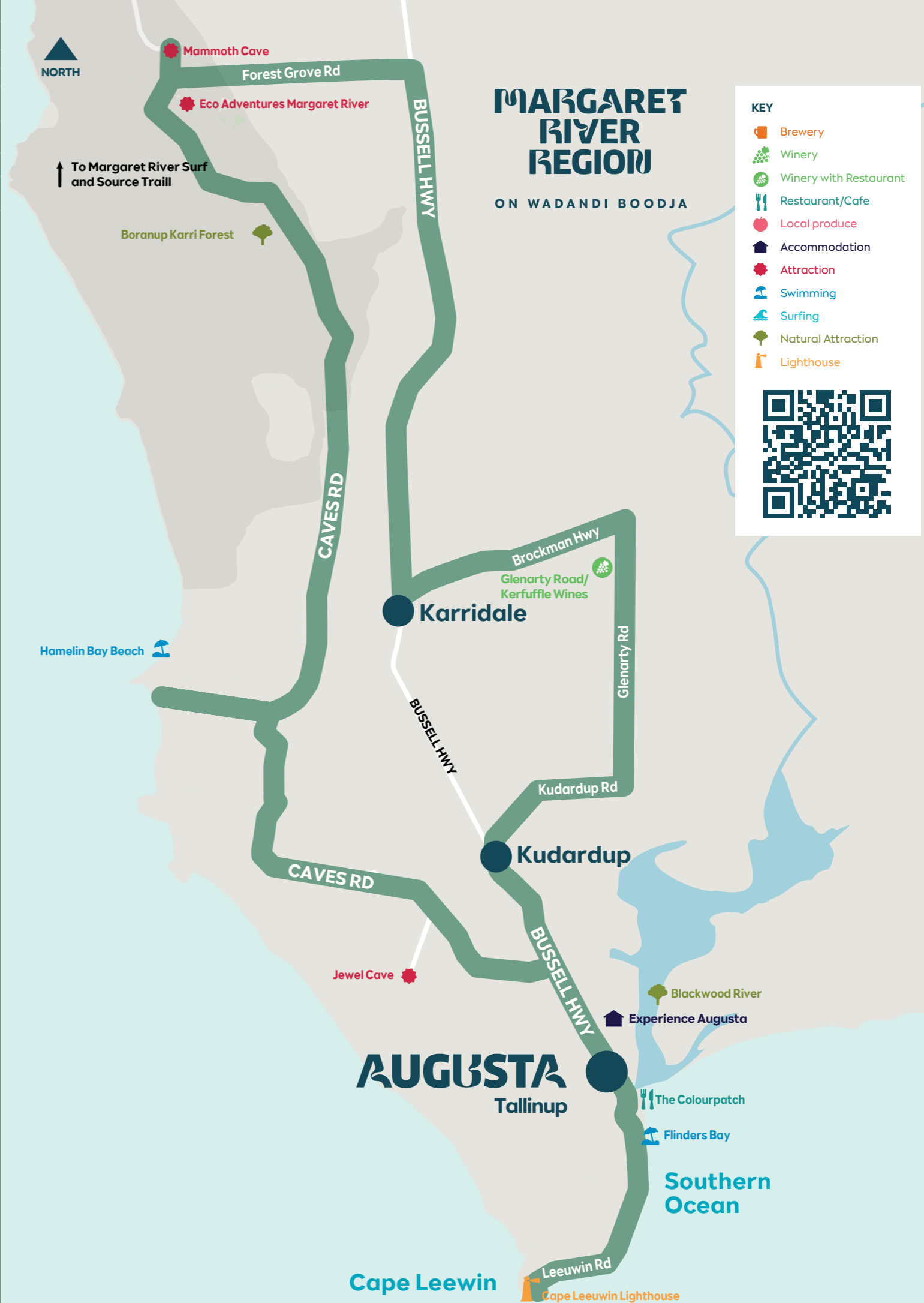
# DRIVE YOUR AUGUSTA STORY



Explore the drive trails at [driveyourstory.com](http://driveyourstory.com)

## Visitor Information

BP Fuel Station  
 Lot 100/102 Blackwood Ave, Augusta  
 Monday – Sunday: 9am – 5pm  
 Telephone: (08) 9758 0097  
 Email: [welcome@margaretriver.com](mailto:welcome@margaretriver.com)





# AUGUSTA

## Where two oceans meet.

Follow your adventurous spirit to one of the most rugged points of Australia; a final landmark before a vast southern unknown, and a Cape where two oceans collide. It's a place to get lost, get wild and return to nature.

Old knowledge is everywhere. Whether it be in the sacred spaces of the First Nations Wadandi People; in the ancient caves, Boranup Forest, cliffs and coast; through to the intuition of the fishing fleets and abalone divers based in town.

It is present at the historic Cape Leeuwin Lighthouse that has shepherded many a passing maritime vessel; or with the generational farming families, some who are bringing old wisdom of livestock, permaculture and vine to a new audience.

The forest, the coast and the Blackwood River, all raw and alive, contributing to a renewed, pared back perspective.



### Highlights

- The Blackwood River
- Cape Leeuwin Lighthouse
- Jewel Cave
- Boranup Forest
- Connection to the land and sea

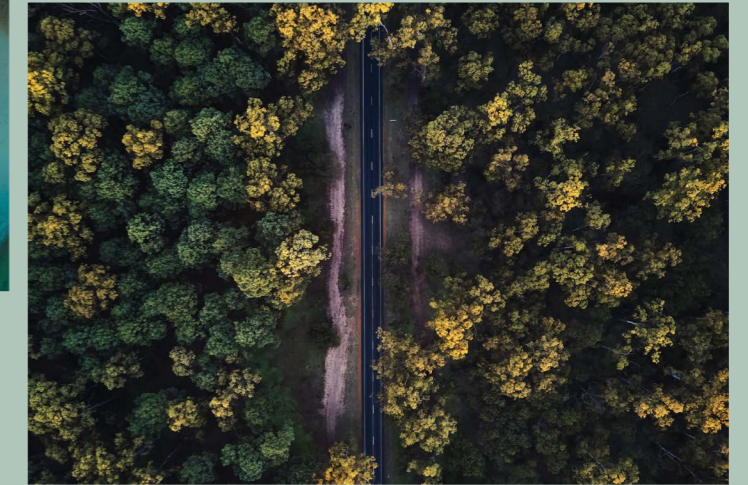


## BLACKWOOD RIVER

The Blackwood River is Augusta's playground, but at some 400-kilometres long, it offers many hidden water holes and camping spots throughout Margaret River's hinterland. The river is the longest in Australia's South West, commencing right up in the Wheatbelt. Running through State and National Forest, there are many picnic, swimming and camping spots to explore along its length, as well as three notable bridges. In Augusta, the river makes up the vast Hardy Inlet, popular for boating, fishing, canoeing, swimming (and even house boating!). There are beautiful walks along the river's banks and much birdlife to discover.

## Flinders Bay

The most accessible way to take a dip in the Southern Ocean is at Flinders Bay, south of Augusta's town centre. It's here that the wild south begins. One of its more scenic and tranquil spots is Granny's Pool, located at the old Flinders Bay Settlement. There's a park right on the water with picnic tables, a ship-style playground and barbecues. The jetty here is a marker for the daily swimmers who brave the often-chilly waters! There's lots for all ages to do like swimming, paddling, fishing, crabbing, snorkelling or watching the pelicans.



## Boranup Forest

Towering karri trees, some over 60m in height, undulate across the valley. With sunlight streaming onto their smooth trunks, this is one of the best sights in the Margaret River Region. This forest is a feast for the senses with the forest floor tumbling with wildflowers, orchids and fungi (in season) together with the sounds of native birds and the fresh smell of eucalypt. Along the drive you'll find the Boranup Lookout which takes in views across the picturesque forest and the stunning turquoise waters of nearby Hamelin Bay. The lookout also marks the start of some lovely bushwalks and has a great picnic spot. Parts of the Leeuwin-Naturaliste National Park and Boranup Forest are currently closed due to recent bushfires in the area. For further advice please visit the Parks and Wildlife Service Alerts website: [alerts.dbca.wa.gov.au](https://alerts.dbca.wa.gov.au)

## Hamelin Bay

This idyllic coastal haven offers a vast expanse of bright white sand, sparkling turquoise waters filled with marine life, and spectacular limestone cliffs. The sheltered bay is great for swimming, snorkelling and fishing, and divers can explore the nearby shipwreck. The wild Eagle Rays that call this sanctuary zone home are a protected species so remember to look but don't touch.





## 🌿 Eco Adventures Margaret River

**Tours departing daily**  
**Ph: 0498 654 588 • 102 Dummond Road, Forest Grove**  
[ecoadventuresmargaretriver.com](http://ecoadventuresmargaretriver.com)

Combining innovation with forest exploration on their tours (where the environmental impact is top-of-mind) to give a unique trail experience suitable for everyone aged four to 94. All that's needed is a current driver's licence (but if you don't have one, join a friend as a passenger). The tour is the only one of its kind to hit the Forest Grove trail area, complete with untouched forest, shaded laneways, open paddocks, lakes and hidden paths. It's 18 kilometres of trail in 90 minutes, aboard an all-electric and environmentally-sensitive EcoBike, designed and built just for Ecoadventures.



## 🍇 Glenarty Road

**Thursday – Sunday 10am – 5pm**  
**Ph: 0475 085 305 • 70 Glenarty Rd, Karridale**  
[glenartyroad.com.au](http://glenartyroad.com.au)

A true wine and food experience stripped back to its essential basics and crafted by a multi-generational farming family. Everything at Glenarty Road feels genuine, from the farmhouse to the roving animals and the rustic tin sheds. This is a farming dream come to life: paying homage to the land, the region and family history, through regenerative agriculture. The property houses a sheep farm, a vineyard and a vegetable garden. Expect crafted wines, grass-fed meats, seasonal produce, house-made charcuterie and a farm-to-table style feast.

## 🍴 The Colourpatch

**Sunday – Wednesday 8am – 4pm**  
**Thursday – Saturday 8am – 8pm**  
**Ph: 9758 1869 • 98 Albany Terrace, Augusta**  
[thecolourpatchaugusta.com](http://thecolourpatchaugusta.com)

An iconic venue that has dominated generations of family holidays on the Blackwood River foreshore of Augusta. The venue has recently undergone an exciting and modern iteration, but still has one of the best waterside dining views in the entire region. The new Café and Bar is open for a breakfast, lunch and dinner, a casual drink or a takeaway meal. Seafood share plates, pizzas, burgers and classic fish and chips are on the menu. The interior gives a nod to the maritime heritage of the area, especially the ten metre, fully restored 1960s yacht.



## 🌿 Mammoth Cave

**7 days 9am – 5pm. Bookings recommended.**  
**Ph: 9757 7411 • Caves Rd, Forest Grove**  
[margaretrivercaves.com](http://margaretrivercaves.com)

This magical cave is a natural time capsule; home to ancient fossil remains of long-extinct giant animals. A fascinating audio tour is available in several languages. Mammoth Cave is a self-guided cave, where visitors explore along the boardwalks and platforms, through the majestic chambers of the cave. This is much more than a cave - it is a complete nature experience. A visit to Mammoth Cave finishes with a winding walk through a beautiful marri forest. The marri forest is currently regenerating and reinventing itself following recent fires.

## 🌿 Jewel Cave

**7 days 9am – 5pm**  
**Tours run every hour from 9.30am.**  
**Bookings recommended.**  
**Ph: 9757 7411 • Jewel Caves Rd, Deepdene**  
[margaretrivercaves.com](http://margaretrivercaves.com)

Caves Road is so-called for its many ancient limestone caves, but Jewel Cave is arguably the best show-piece of them all. It's Western Australia's biggest show cave, with three massive chambers of incredible beauty. A fully guided one-hour tour takes in all its wondrous formations, like one of the longest "straw" stalactites in Australia, beautiful flowstone, cave coral and more. Learn about Tasmanian Tiger activity here thousands of years ago. Opt for a self-guided walk through the Karri forest or pop into the adjoining café during your visit.

## 🗨 Cape Leeuwin Lighthouse

**7 days 9am – 5pm**  
**Tours depart every half hour.**  
**Bookings recommended.**  
**Ph: 9757 7411 • Leeuwin Rd, Augusta**  
[margaretriverlighthouses.com](http://margaretriverlighthouses.com)

A visit to Cape Leeuwin Lighthouse comes with the rush of the open wild; it's one of the four geographical 'corners' of Australia and the place where the Indian and Southern Oceans meet. This is the tallest lighthouse on mainland Australia (and one that's still working - vital for seafarers navigating around the treacherous Cape). A award winning Interpretive Centre, housed in an original lighthouse keepers' cottage, holds an interactive experience about the history and life of the building since its construction in 1895. Otherwise, visit to spot whales from May to September, or pop STAY



## 🏠 Experience Augusta

[Experienceaugusta.com.au](http://Experienceaugusta.com.au)

The locally-owned and run authority on accommodation in scenic Augusta, with well over 30 different holiday homes in its portfolio, from humble units to modern main street townhouses and architectural beachside homes. The company is more than just a booking service, with an intimate knowledge of the region to help with any holiday planning, activity or day trip advice. The team can arrange hire services, beauty and wellness treatments, breakfast provisions and hampers and more. Experience Augusta prides itself on personal service.

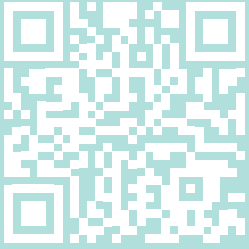


# DRIVE YOUR STORY

Feel the adventure unfolding in your hands as you explore beyond the expected. Discover wild places, culture, produce, ideas and inspiration to make your next getaway an unforgettable experience.

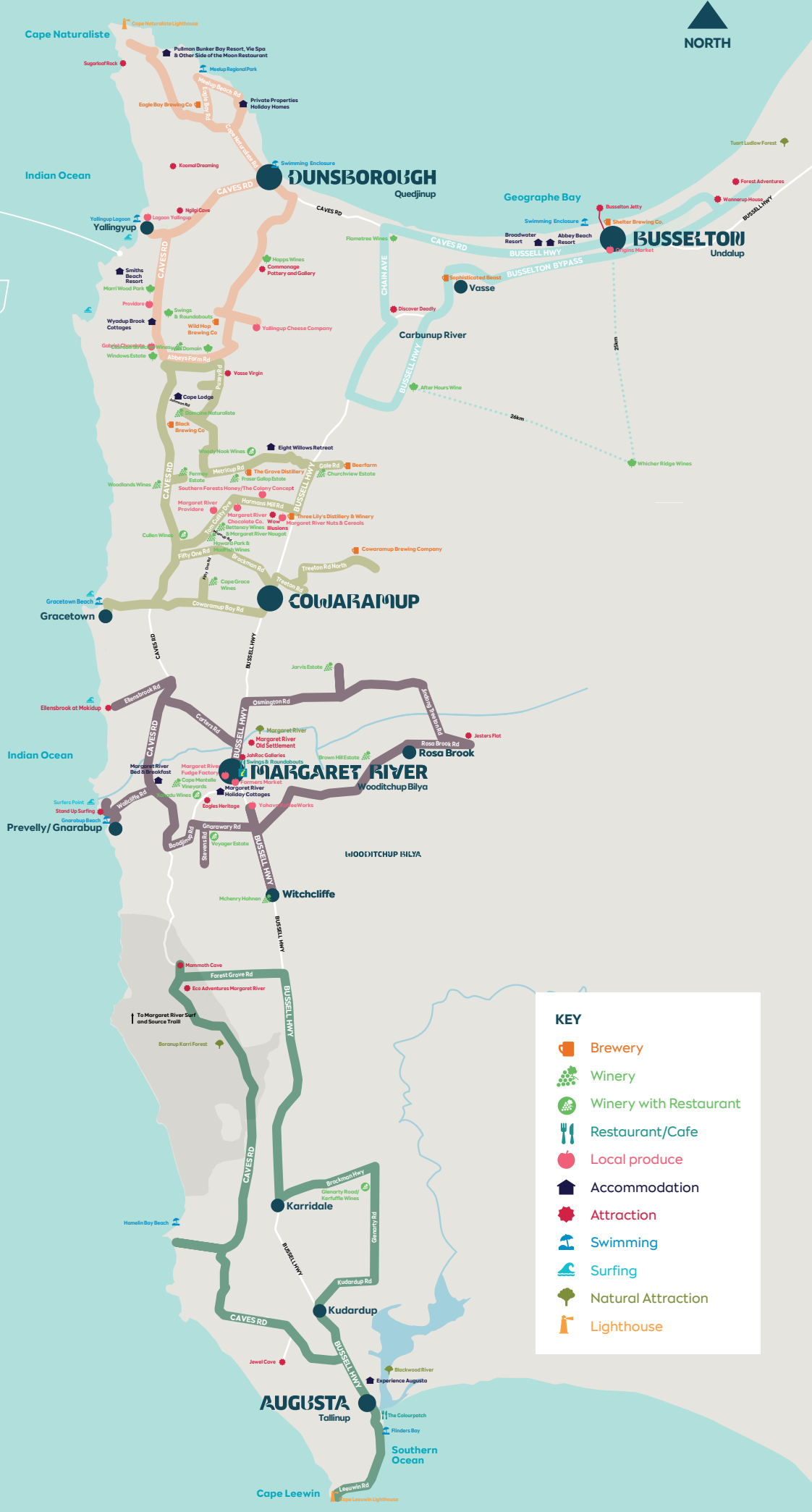
Plan ahead then feel free to get a little sidetracked while finding new favourites, slowing down with a swim, or stopping into a hidden gem. Linger a little longer to bask in the glow of sunset. Bring home a story that's all your own.

Scan to start your journey.



# MARGARET RIVER REGION

ON WADANDI BOODJA



**KEY**

- Brewery
- Winery
- Winery with Restaurant
- Restaurant/Cafe
- Local produce
- Accommodation
- Attraction
- Swimming
- Surfing
- Natural Attraction
- Lighthouse